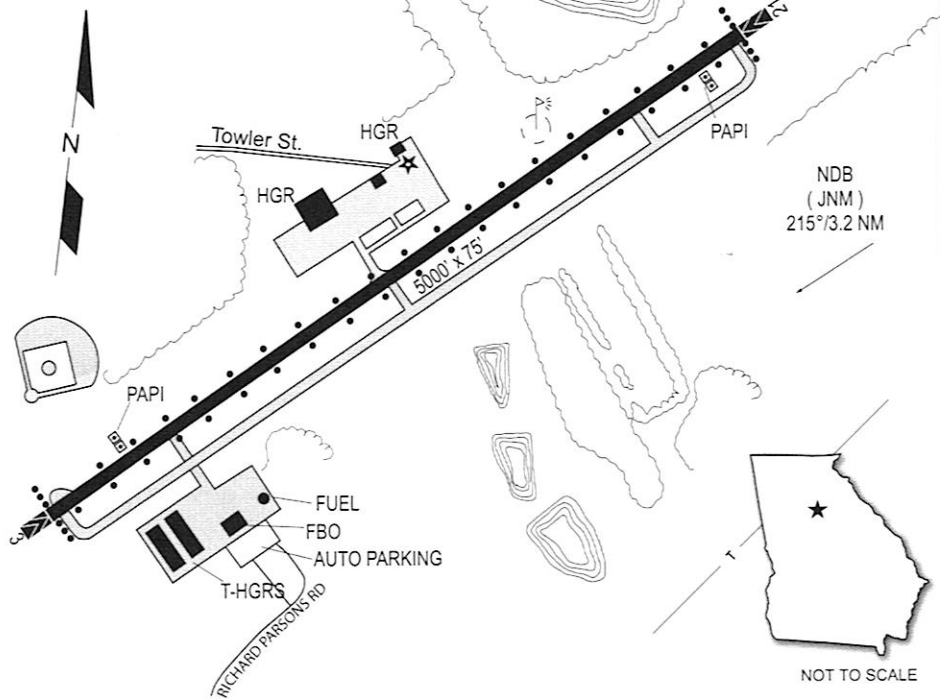


CTAF 122.9
 ATL APP/DEP 126.975
 NDB / AWOS - A (JNM) 392



LAT: 33 46.95' N

LONG: 83 41.57' W

ELEVATION: 875'

LIGHTING:

RWY: Dusk - 2200. After 2200 - CTAF

PAPI: Rwy 3 & 21 operate with rwy lights

BEACON: Yes

OTHER: No

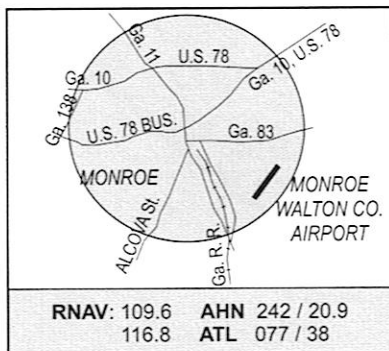
FUEL: 100LL, Jet A

RESTROOM: Yes

PHONE: FBO: (770) 267-2343; Mgr: (770) 267-7536

ATTENDED: 0800 - 1700

REMARKS: Extensive glider operations; Deer in Vicinity.
 Altimeter setting on NDB.



MONROE

Monroe-Walton County

D73