

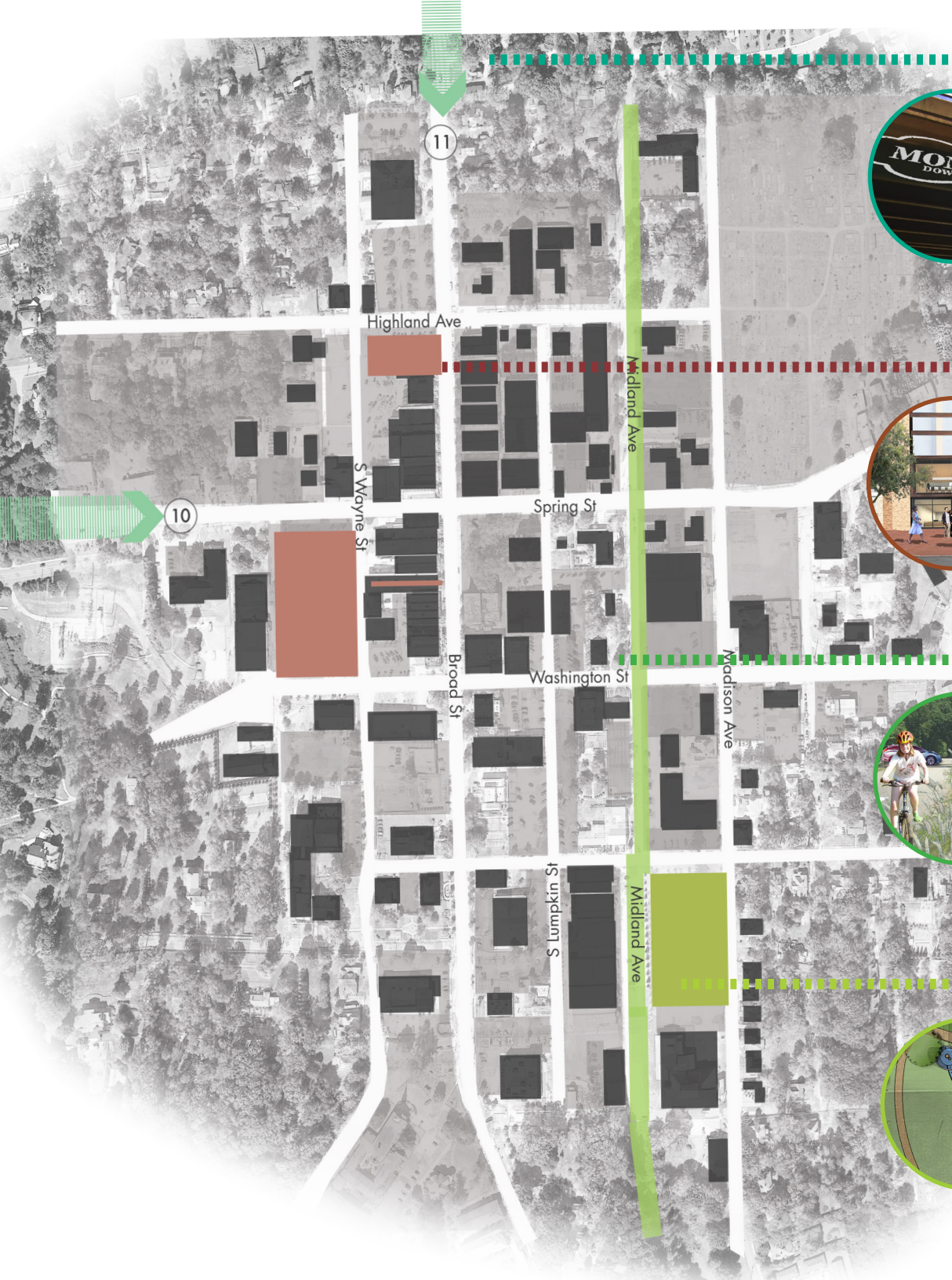
# *Renaissance Fellow*

*Summer 2016*



Siyu Hou  
College of Environment +Design ,UGA  
Carl Vinson Institute of Government , UGA





**Place Of Arrival-Signage**



**Urban Mixed-use Infill**



**Midland Ave Retrofit**



**Town Green Park**

An aerial view of a multi-lane highway bridge. A red car is driving on the road below the bridge. The bridge has a concrete structure with metal railings. A sign on the bridge reads "S.R. 11". The road below has a yellow double line on the left and a white dashed line in the center. The surrounding area is green with trees and grass.

# 1. GA-11 Bridge / HWY 78 Signage Improvement

# Existing Condition



**North GA-11 Bridge**



**HWY 78 -Monroe HWY**

# Enhancement Of The Bridge



## • Reverse Graffiti

A method of creating temperate or semi-permanent image on hardscape by removing dirt from the surface

Existing



Highlight Monroe



Bridge columns decoration

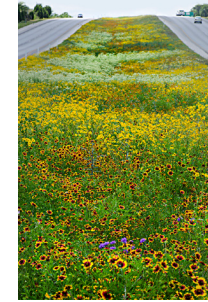




## Bridge Night View

Lights help attract more attention and provide safety when people drive at night.

# HWY 78 Welcome Signage



• **Regreening the median**

by planting Creeks meadow and wild-flowers



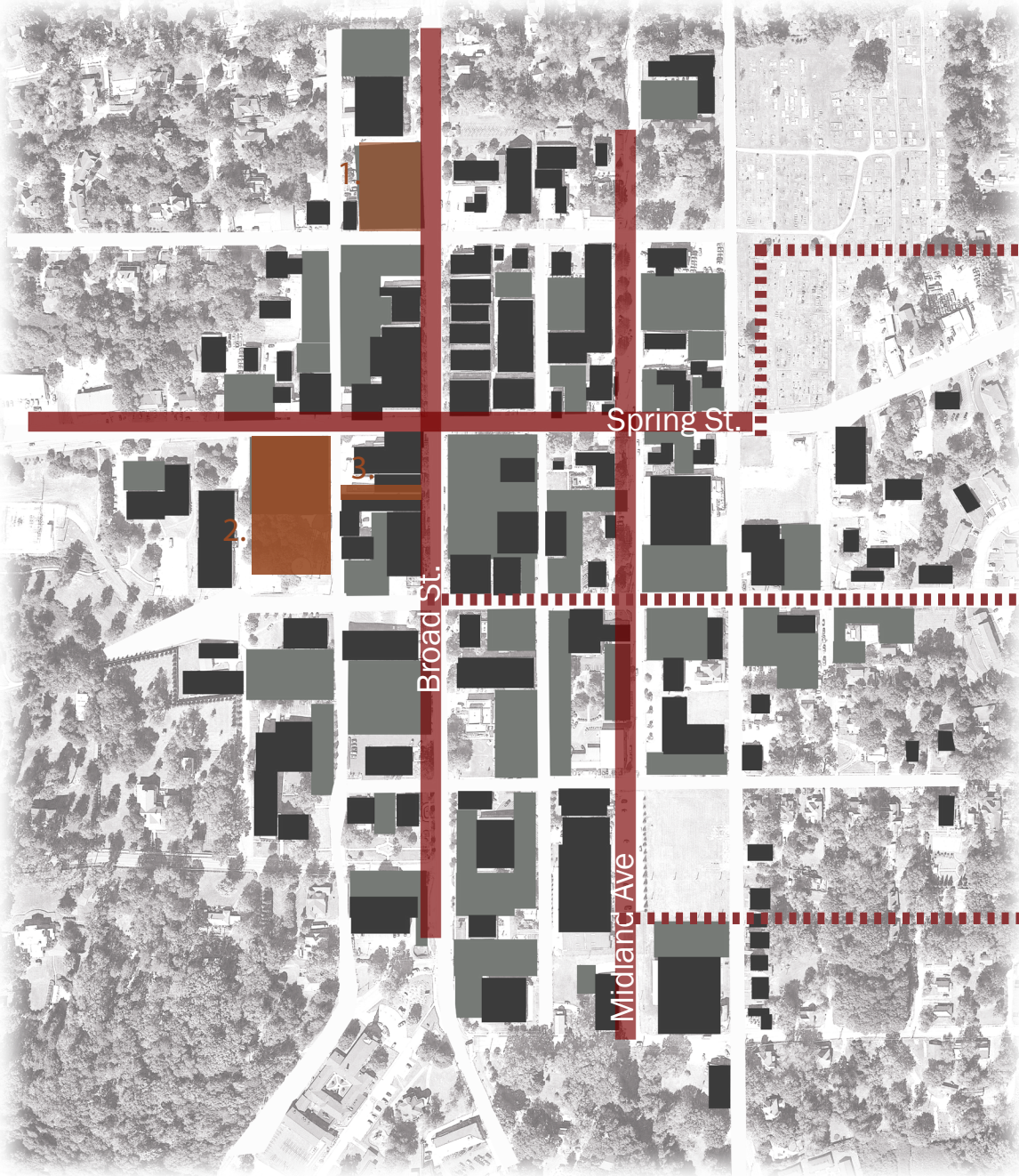
• **DOT Signage Decoration**



A photograph of a street intersection under a clear blue sky. The intersection features traffic lights and street signs for 'Highland Ave' and 'Broad St'. A red semi-transparent box is overlaid in the center of the image, containing the text '2. Mixed-use Infills'. In the background, there is a brick building on the left with a sign for 'Hair Salon Tanning' and a parking lot with several cars on the right. A utility pole with multiple wires is also visible.

## 2. Mixed-use Infills





parking lots

structures

parking lots

structures

parking lots

structures

**make good use of extra off street parking spaces**

# Corner Infill existing condition



# Before



# After



plan view



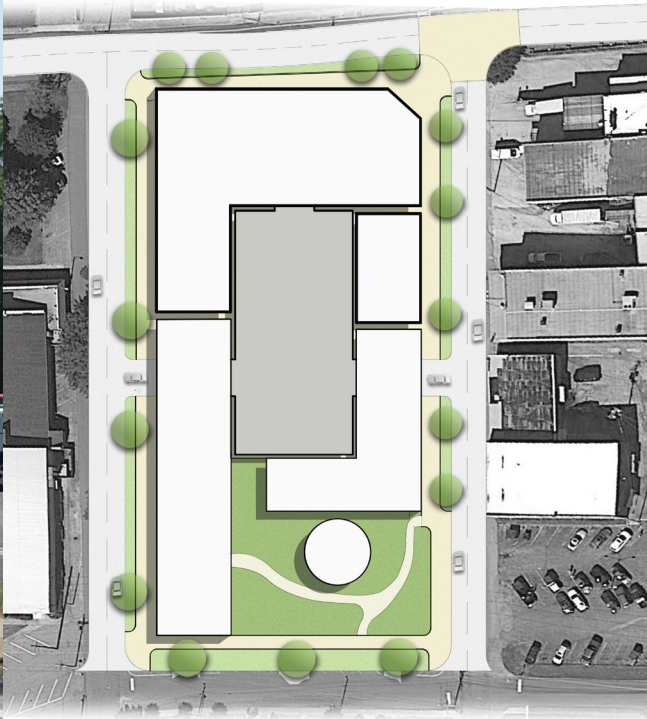
# Wayne St. & W Spring St parking infill existing condition



# Before



plan view



# After



# Before



The alley is located at the N Wayne St, next to the Monroe Police Department. It's currently an short cut to the City Courthouse. Simple decorations will change the passageway to the small public plaza.



# After



# Before

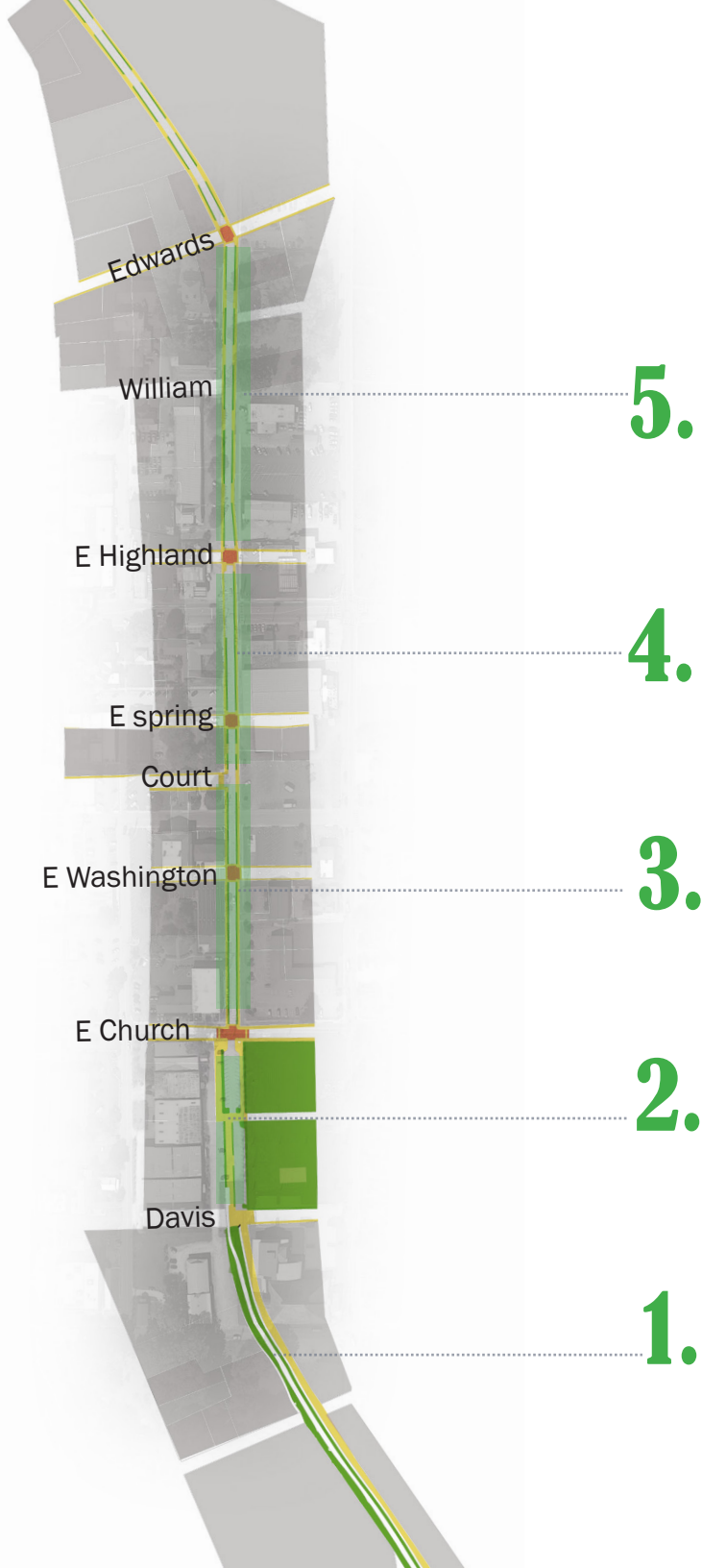


# After



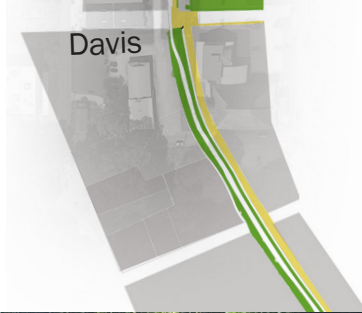


### **3. Midland Ave Retrofit**



**Let's Walk and bike  
to downtown !**

# 1. Natural Rail & Trail Before

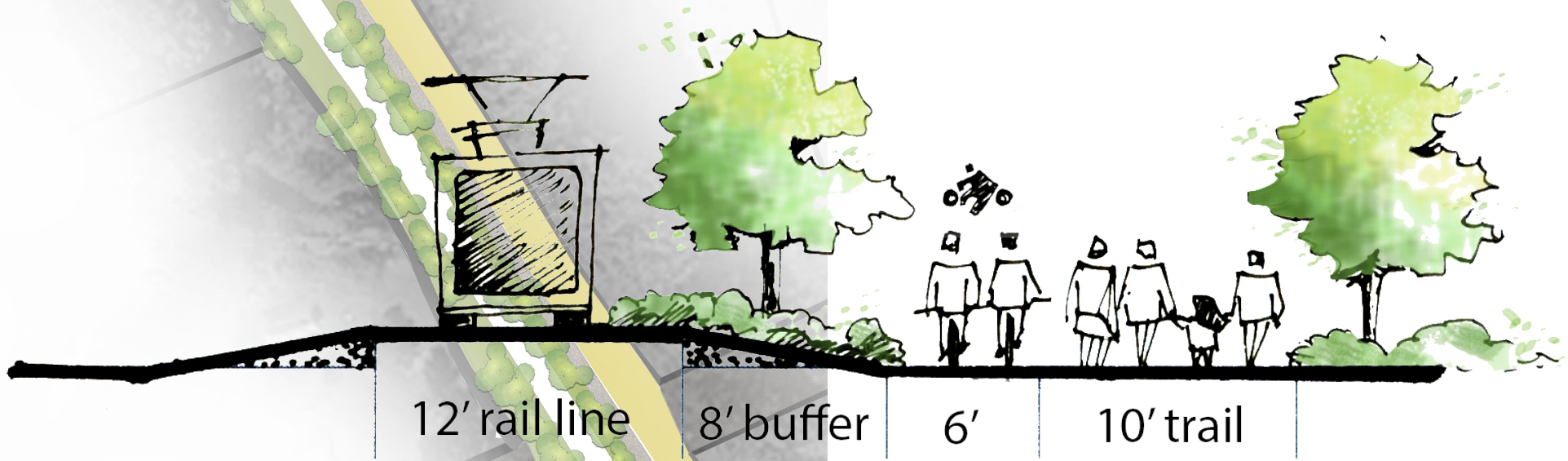


# 1. Natural Rail & Trail After



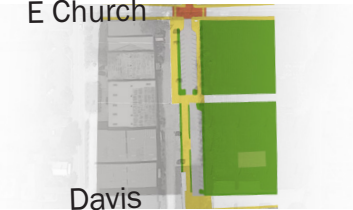
Davis St.

# 1. Natural Rail & Trail





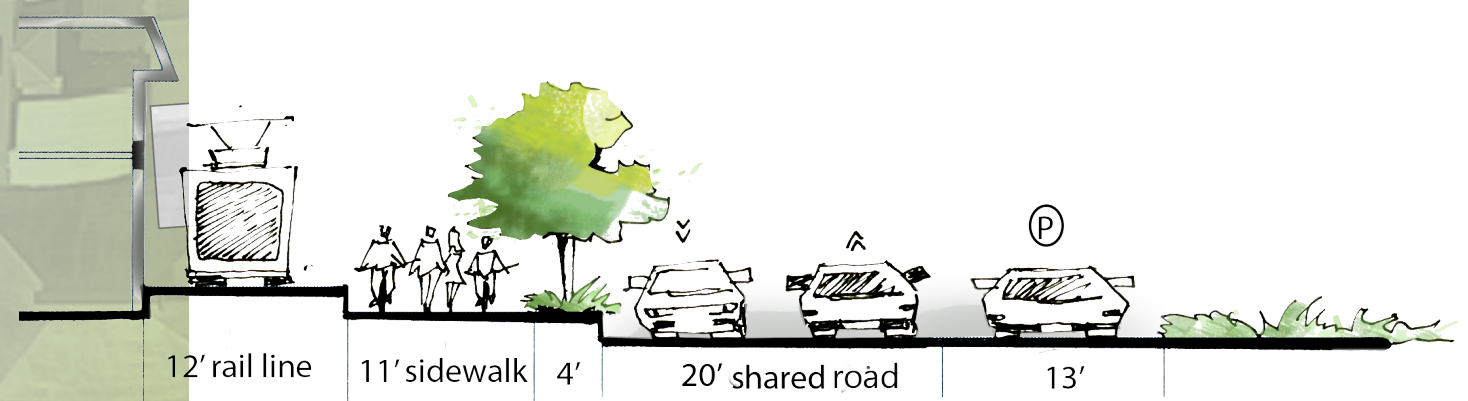
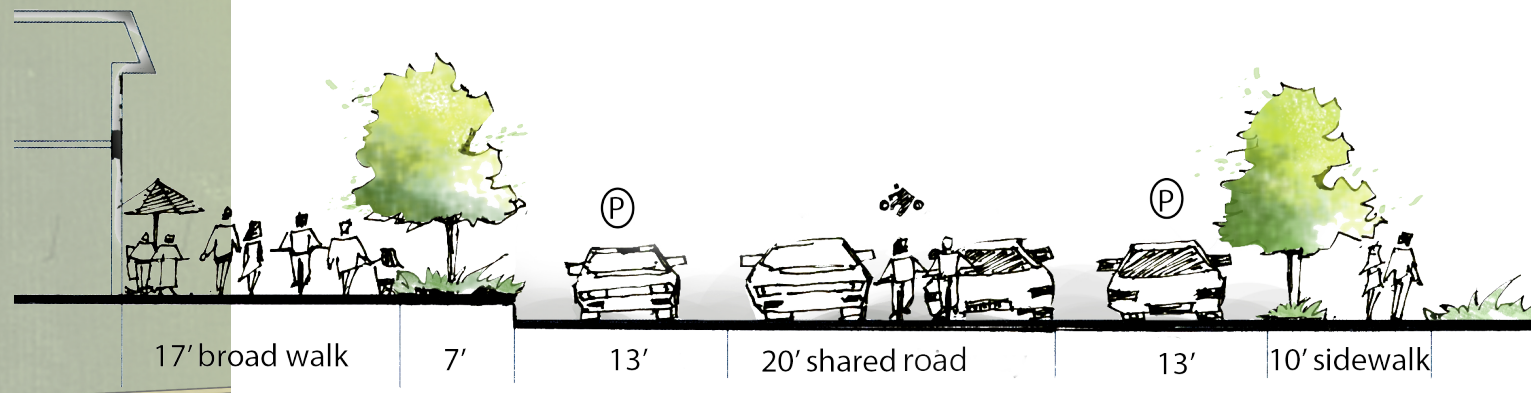
# 2. Rail line Head Section Before



# 2. Rail Line Head Section After



Pennisetum  
Purple Grass  
Wentz



**Shared lanes** are roadways open to both cars and bicycles or pedestrians.

- They are designed to slow vehicular traffic down and allow bicyclists and pedestrians to have the right of way.

- Shared lanes are typically used in areas where increased pedestrian or bicycle traffic is desired or where a community wants to slow down cars or decrease the traffic flow. A shared lane typically requires 10 to 14 feet of roadway space. General directional signage may be needed to better guide drivers and bicyclists.



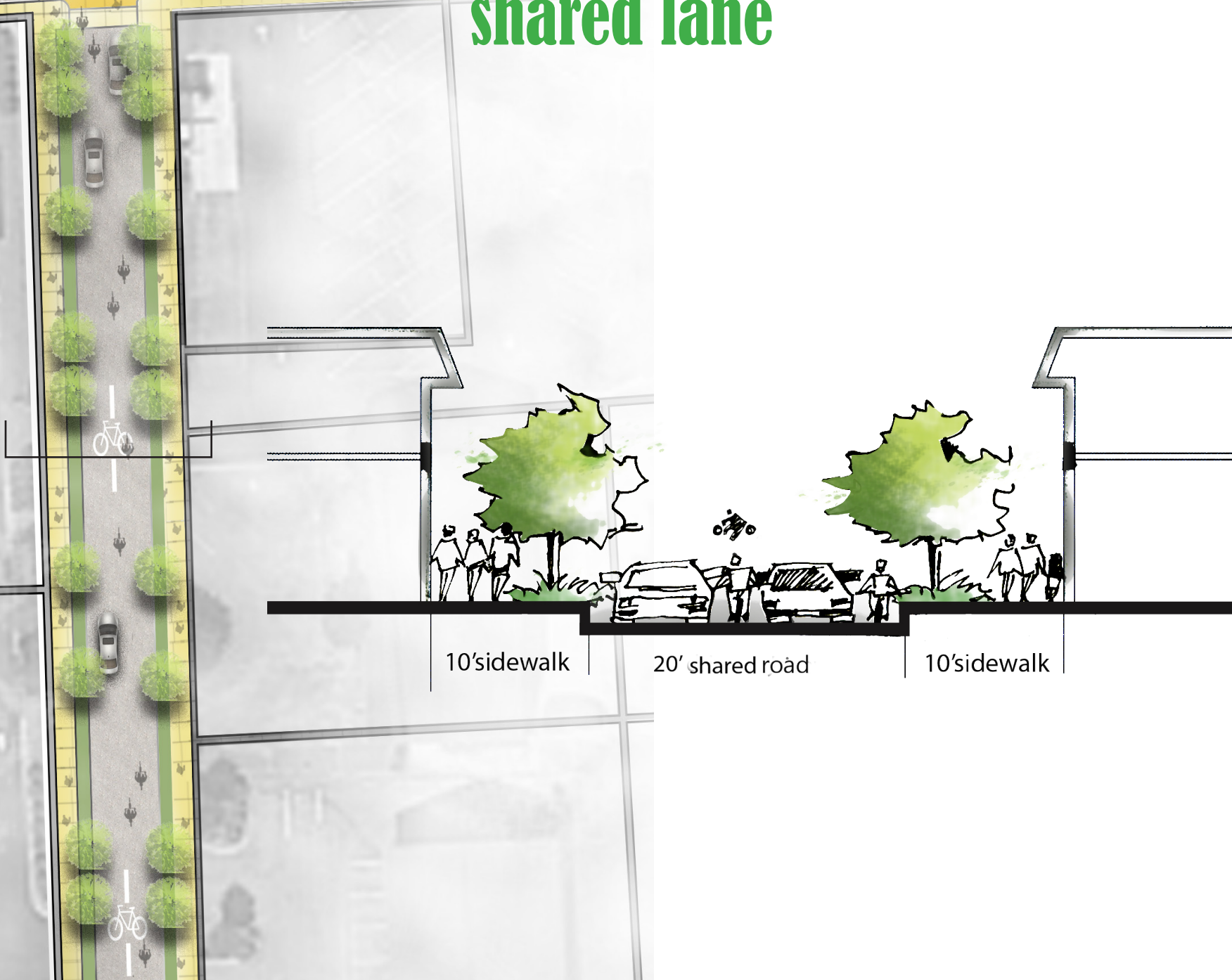
# 3. Church To Court St Section Before



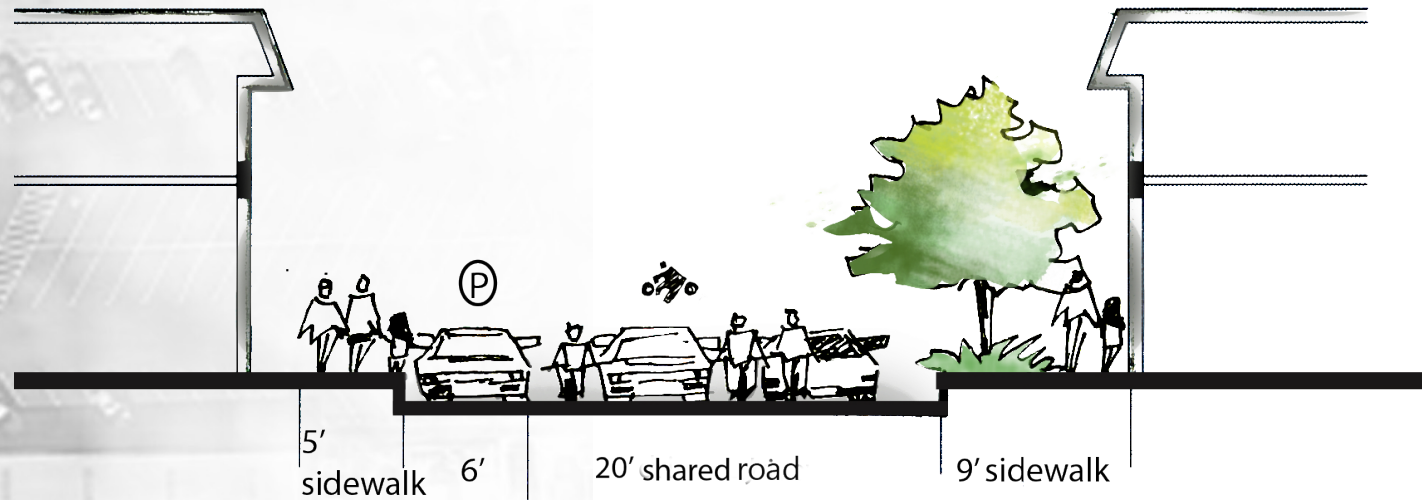
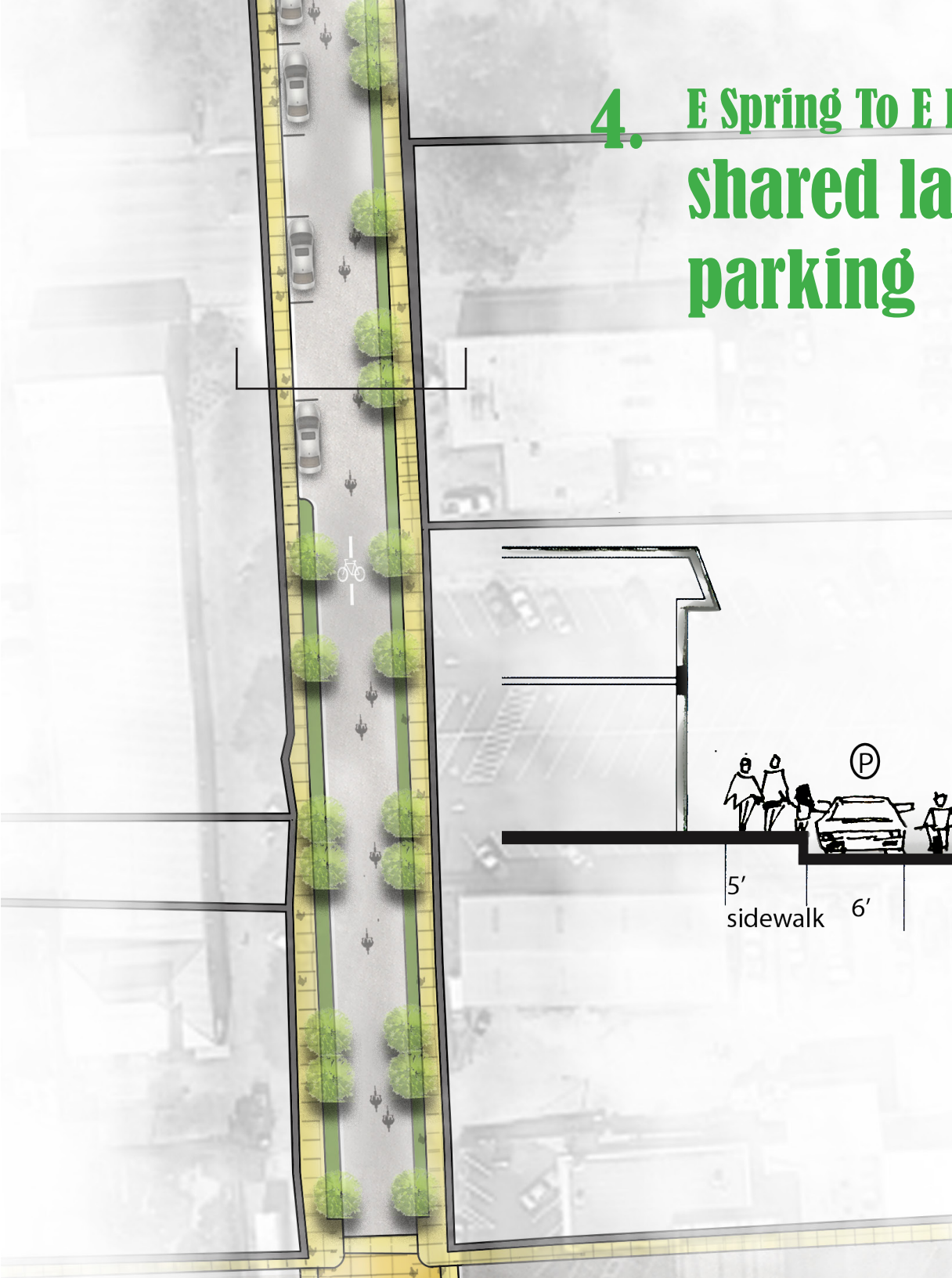
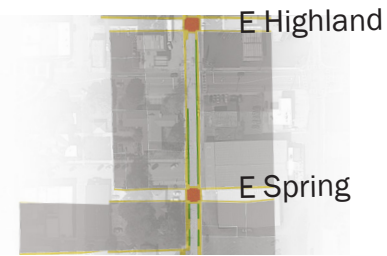
### 3. Church To Court St Section After



### 3. Church To Court St Section shared lane

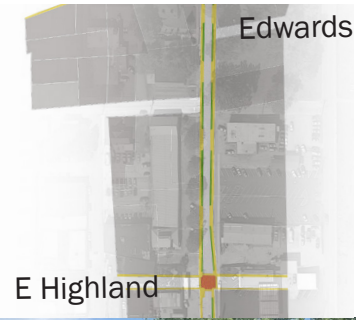


# 4. E Spring To E Highland Section shared lane with on street parking





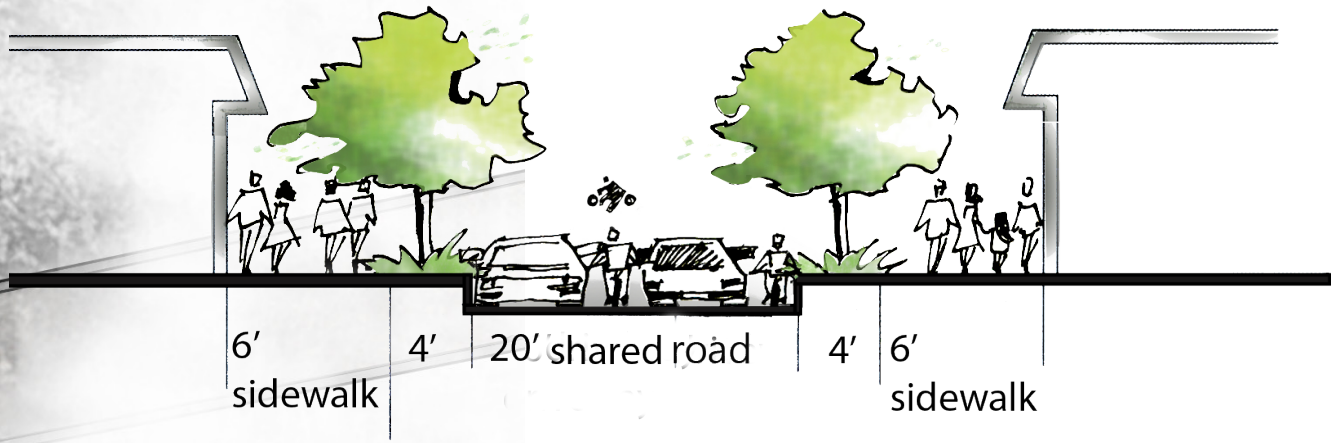
# 5. E highland To Edwards St Section Before



## 5. E highland To Edwards St Section After



# 5. E highland To Edwards St Section shared lane



6'  
sidewalk

4'

20' shared road

4'

6'  
sidewalk

## 4. Town Green Park





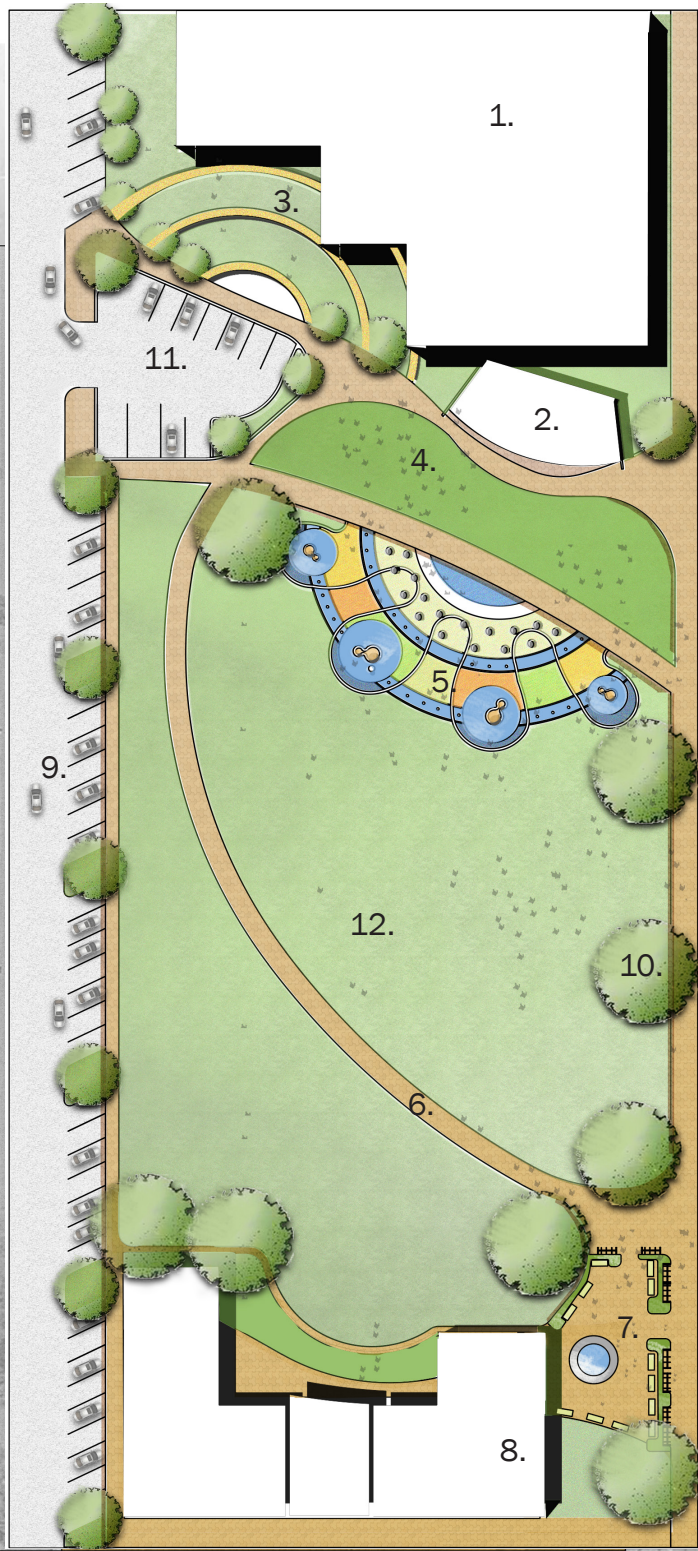
## Existing Condition

The existing green field located along the south Madison Ave is not regulated by the city but has potential to become a more public land for future development.

The field in general is about 1.84 acres and it is located at the beginning of the Midland Ave. Because of the only large green field within southern downtown with its suitable location, the land is suggested to be open and proposed to be the second city park besides the Childers Park.

In the future, the park has potential to become the main town green with multiple public functions within downtown Monroe, which will rise the surrounded land value and bring new business to the downtown Monroe.

# Culture + Community + Commerce



## Plan

- |                             |                        |
|-----------------------------|------------------------|
| 1. warehouse                | 2. temperate stage     |
| 3. wedding terrace          | 4. audience lawn       |
| 5. children playground      | 6. board walk          |
| 7. entry plaza              | 8. mixed-use infill    |
| 9. on street angled parking | 10. large shaded trees |
| 11. parking lot             | 12. green lawn         |

# Entry Plaza Before



# Entry Plaza **After**





# Outdoor Event Space **Before**



# Outdoor Event Space After



# Terraced Wedding Garden **Before**



# Terraced Wedding Garden After



# Mixed-use Infill Before



# Mixed-use Infill **After**



# Town Green Park Cost Estimation

<http://www.splashpadsusa.com/>  
[http://www.archwaypartnership.uga.edu/wp-content/uploads/2013/11/Best-Practices-for-Public-Splash-Pads\\_Taha-Hameddudin\\_FINAL.pdf](http://www.archwaypartnership.uga.edu/wp-content/uploads/2013/11/Best-Practices-for-Public-Splash-Pads_Taha-Hameddudin_FINAL.pdf)  
<http://www.splashpadllc.com/index.php/FAQs/faqs/>

## PRELIMINARY CONSTRUCTION COST ESTIMATE

*S Madison street Town Green park*

DESCRIPTION	UNIT	UNIT PRICE	QUANTITY	PRICE
Asphalt paving 2inch overlay parking lot	SF	\$1.46	4000	\$5,840.00
Concrete 4inch reinforce slab	SF	\$5.00	10836	\$54,180.00
poured rubber playground surfacing	SF	\$15.00	5258	\$78,870.00
Street Trees	EA	\$300.00	25	\$7,500.00
mowing & Maintenance	AC	\$99.38	2	\$198.76
Grassing	AC	\$231.20	1	\$231.20
Benches	EA	\$1,500.00	10	\$15,000.00
Trash Receptacles	EA	\$1,500.00	10	\$15,000.00
Splash Pads	SF	\$150.00	1660	\$249,000.00
<b>SUBTOTAL</b>				<b>\$ 425,459.96</b>
20% Contingency				\$85,091.99
<b>CONSTRUCTION TOTAL</b>				<b>\$ 510,550.95</b>

# Plant Choices



Chaste Tree



Crapemyrtle



Winged Elm



Sycamore Tree



Japanese Zelkova



Southern Sugar Maple

## Plant Species Recommendation List

SPECIES COMMON NAME	LATIN NAME	Height Class in Urban Conditions	Mature Crown Form
Chastetree (Vitex)	<i>Vitex agnus-castus</i>	Small	Multi-Stemmed
Crapemyrtle, Common	<i>Lagerstroemia indica</i>	Small	Multi-Stemmed
Elm, Winged	<i>Ulmus alata</i>	Large	Upright
Maple, Southern Sugar	<i>Acer barbatum</i>	Medium	Rounded
Sycamore	<i>Platanus occidentalis</i>	Large	Oval
Zelkova, Japanese	<i>Zelkova serrata</i>	Large	Upright





Thank you --- Q&A

